

SNAKEBITE...

IF THE SNAKE RESPONSIBLE HAS BEEN IDENTIFIED

In Boomslang or Twig Snake bites...



Common Boomslang Male



Cape Boomslang Male



Cape Boomslang Female



Common Boomslang Juvenile

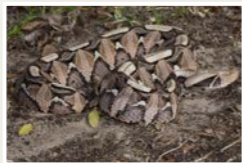


Twig Snake

In Adder, Stiletto or Spitting Cobra Bites...



Puff Adder



Gaboon Adder



Night Adder



Berg Adder



Stiletto Snake



Mozambique Spitting Cobra



Zebra Cobra



Black Spitting Cobra
Photo Marius Burger

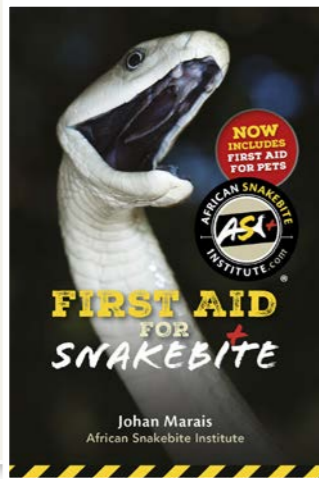


Black-necked Spitting Cobra



Rinkhals

In Mamba and Non-spitting Cobra Bites...



To order, please e-mail info@asiorg.co.za



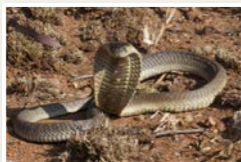
Black Mamba



Green Mamba



Cape Cobra



Snouted Cobra



Anchieta's Cobra



Forest Cobra

IF THE PATIENT EXPERIENCES DIFFICULTY WITH BREATHING

WHAT TO DO...

Immobilise the patient and promptly transport to hospital.

Elevate the affected limb slightly above the heart and immobilise the limb.
NO PRESSURE BANDAGES

Wrap the affected limb in pressure bandages and apply a splint.

Apply mouth-to-mouth resuscitation. Make use of a Bag Valve Mask.

PROMPTLY TRANSPORT TO THE NEAREST HOSPITAL

IF THE SNAKE RESPONSIBLE HAS NOT BEEN IDENTIFIED

IF THERE IS PAIN AND SWELLING

IF THE PATIENT EXPERIENCES DIFFICULTY WITH BREATHING



FIRST AID FOR SNAKEBITE